

Milos







MILLOS  
RESIDENCE





**أريان** **ARIANE**  
العقارية REAL ESTATE

تُشكل التقاليد الغنية والعريقة لدولة قطر والنظرة المستقبلية الواثقة الأسس التي تتركز عليها أعمال التطوير التي نديرها.

بدأت مسيرة تغيير المشهد العمراني في قطر، مع إرساء القواعد لبناء مدينة توفر مركزاً ينبض بكل أشكال الحياة لبناء مستقبل مشرق.

كما نحرص على توفير بيئة متميزة يتم تشييدها وفق مخطط عمراني متكامل يجمع بين البيئة السكنية المثالية عالية الجودة وبين النشاط التجاري المزدهر وبلبي بذلك احتياجات المجتمع السكني المتطور باستمرار في الدولة دائمة التغيير.

Amid The richness and depth of Qatar traditions and future-proof outlook are the foundations for every one of our developments.

A transformation of Qatar landscape has begun, and as the foundations of a brand new, vibrant hub for the people's brilliant future has been set in motion.

The promise of distinctive real estate developments, encompassing master-planned communities of optimal living quality and commercial energy is being created to fulfill the needs of an evolving society in an ever-changing country.





## الموقع The Location

انطلاقاً من مركزها كواحدة من أسرع المدن نمواً في الشرق الأوسط، أصبحت الدوحة وجهة مقصودة بالنسبة للكثيرين و تم اختيارها لاستضافة فعاليات كأس العالم 2022.

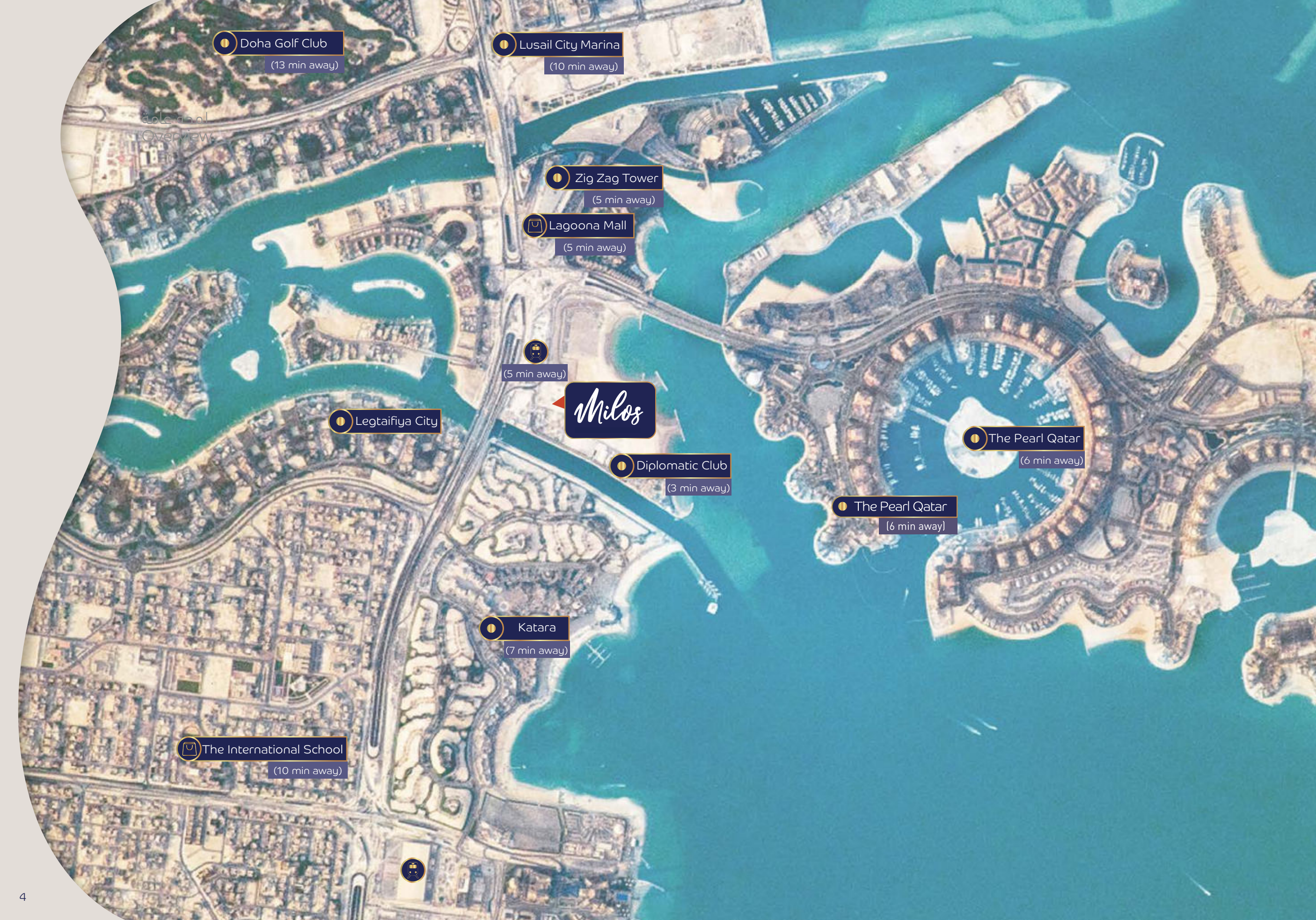
أما منطقة لقطيفية التي تبعد 10 كلم عن وسط مدينة الدوحة، فهي واحدة من المدن المستدامة في دولة قطر. فمن خلال مفاهيمها الطموحة و الرائدة التي تجسد الحياة المثالية، تعكس المدينة رؤية المستقبل التي تتمثل في رؤية قطر الوطنية 2030، و هي رؤية تجعل غد البلاد أكثر استدامة و ذكاءً و توافقاً مع محيطها الطبيعي.

ان موقع "ميلوس" المتميز بالقرب من مجموعة متنوعة من المرافق الترفيهية و الرياضية يجعل منه مكاناً جديداً للعيش المرغوب.

Located in one of the fastest growing cities in the Middle East, Doha has become a highly coveted destination and will be hosting the 2022 World Cup.

Legtifiya, 10 km north of central Doha, it is one of the sustainable cities in Qatar. Its ambitious and ground-breaking concepts, epitomizing idyllic living. A vision of the future needs at city for the future. Legtifiya City personifies the Qatar National Vision 2030, a vision that makes the country's tomorrow more sustainable, smarter, and more aligned with its natural surroundings.

Milos' an enviable location near a variety of entertainment and sports facilities make it the new place for a new life style.





# Milos

مصمم لراحتك.  
Designed for your comfort.

من أجمل ما يميز الحياة في ميلوس تصميمه الرائع والفريد من نوعه حيث أنك ستشعر بخصوصية المكان وإفتخارك بالعيش فيه.

You will feel proud to live in Milos' the privacy of the place with the most beautiful features of living, and wonderful & unique design.



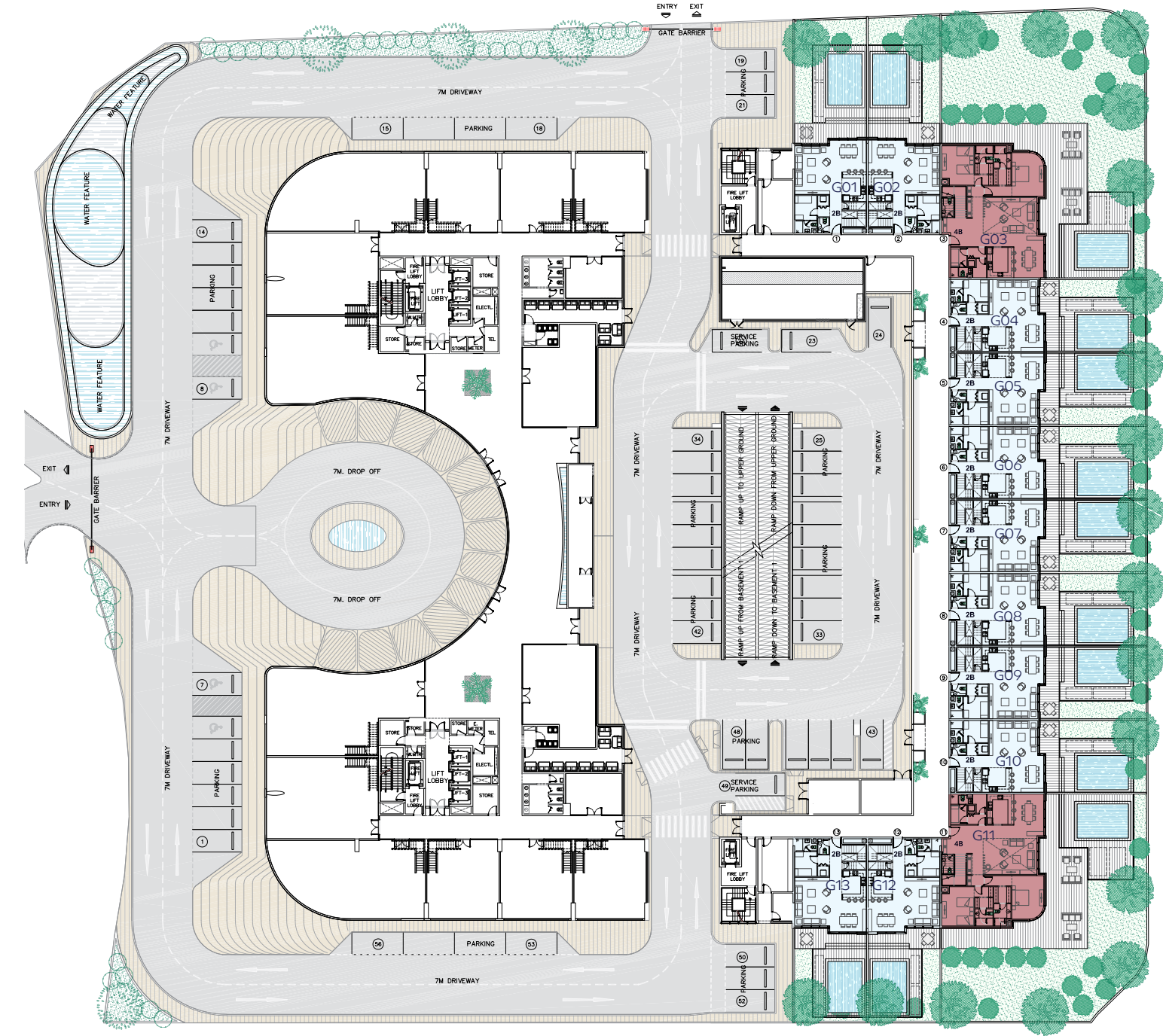
*Milos*

MASTER PLANS  
المخططات العامة



الطابق الأرضي  
Ground Floor

Floor	Apartment No.	Apartment Type	Apartment Area in Ground	Apartment Area in Upper Ground	Total Unit Area	Balcony / Pool	Garden	Total Area
Ground	Apartments G01	2BD DUPLEX	93.2	83	176.2	75.8	45.2	297.2
	Apartments G02	2BD DUPLEX	93.2	83	176.2	75.8	47	299
	Apartments G03	4BD DUPLEX	182.2	125	307.2	190	374.2	871.4
	Apartments G04	2BD DUPLEX	93.2	83	176.2	71.2	30.5	277.9
	Apartments G05	2BD DUPLEX	93.2	83	176.2	71.2	30.5	277.9
	Apartments G06	2BD DUPLEX	93.2	83	176.2	71.2	30.5	277.9
	Apartments G07	2BD DUPLEX	93.2	83	176.2	71.2	30.5	277.9
	Apartments G08	2BD DUPLEX	93.2	83	176.2	71.2	30.5	277.9
	Apartments G09	2BD DUPLEX	93.2	83	176.2	71.2	30.5	277.9
	Apartments G10	2BD DUPLEX	93.2	83	176.2	71.2	30.5	277.9
	Apartments G11	4BD DUPLEX	182.2	125	307.2	190	251	748.2
	Apartments G12	2BD DUPLEX	93.2	83	176.2	68.5	20.2	264.9
	Apartments G13	2BD DUPLEX	93.2	83	176.2	68.5	21	265.7
	Total		1389.6	1163	2552.6	1167	972.1	4691.7

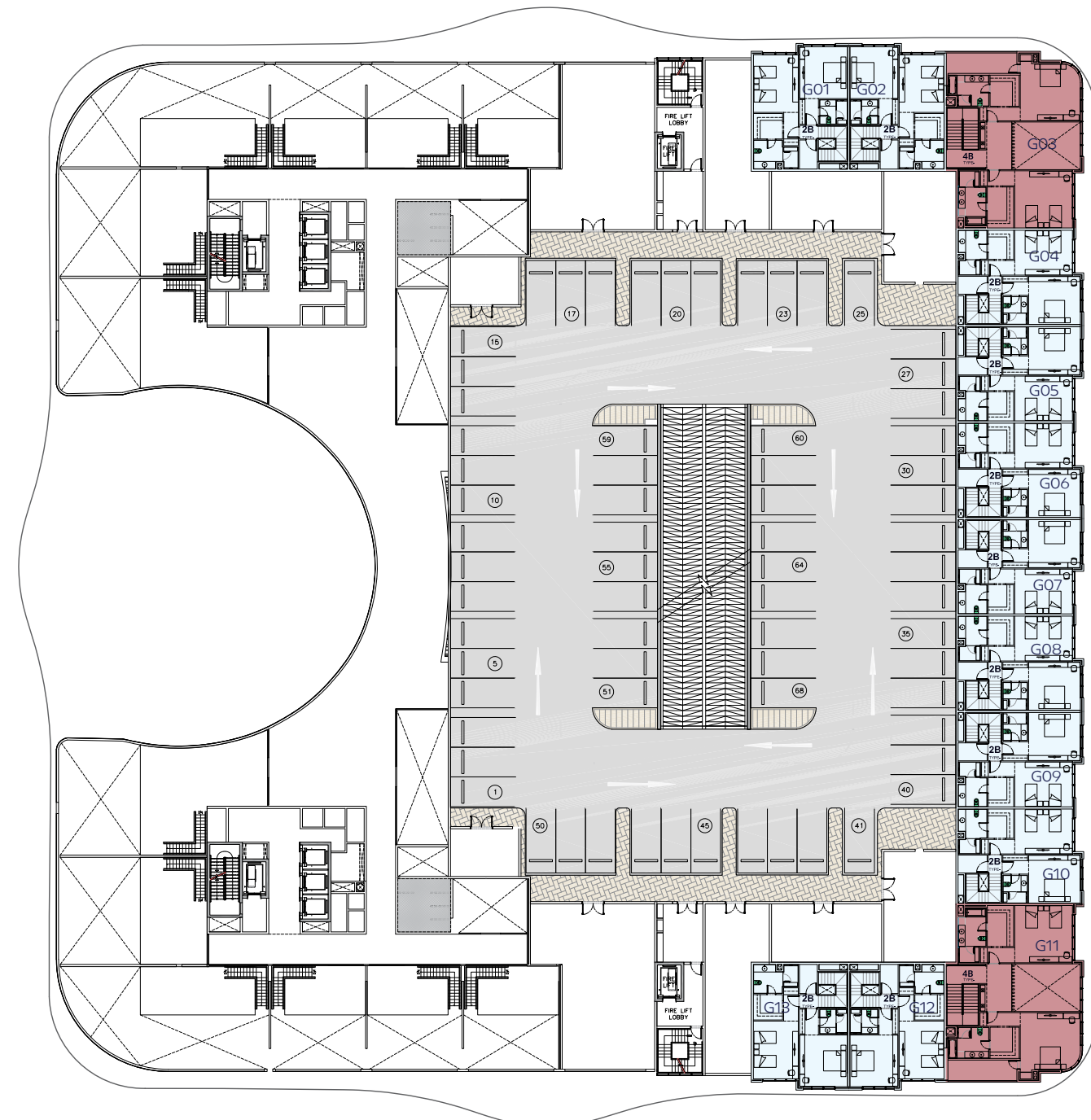


2 Bedroom Duplex      4 Bedroom Duplex



الطابق العلوي  
Upper Ground Floor

Floor	Apartment No.	Apartment Type	Apartment Area in Ground	Apartment Area in Upper Ground	Total Unit Area	Balcony / Pool	Garden	Total Area
Upper Ground	Apartments G01	2BD DUPLEX	93.2	83	176.2	75.8	45.2	297.2
	Apartments G02	2BD DUPLEX	93.2	83	176.2	75.8	47	299
	Apartments G03	4BD DUPLEX	182.2	125	307.2	190	374.2	871.4
	Apartments G04	2BD DUPLEX	93.2	83	176.2	71.2	30.5	277.9
	Apartments G05	2BD DUPLEX	93.2	83	176.2	71.2	30.5	277.9
	Apartments G06	2BD DUPLEX	93.2	83	176.2	71.2	30.5	277.9
	Apartments G07	2BD DUPLEX	93.2	83	176.2	71.2	30.5	277.9
	Apartments G08	2BD DUPLEX	93.2	83	176.2	71.2	30.5	277.9
	Apartments G09	2BD DUPLEX	93.2	83	176.2	71.2	30.5	277.9
	Apartments G10	2BD DUPLEX	93.2	83	176.2	71.2	30.5	277.9
	Apartments G11	4BD DUPLEX	182.2	125	307.2	190	251	748.2
	Apartments G12	2BD DUPLEX	93.2	83	176.2	68.5	20.2	264.9
	Apartments G13	2BD DUPLEX	93.2	83	176.2	68.5	21	265.7
	Total		1389.6	1163	2552.6	1167	972.1	4691.7

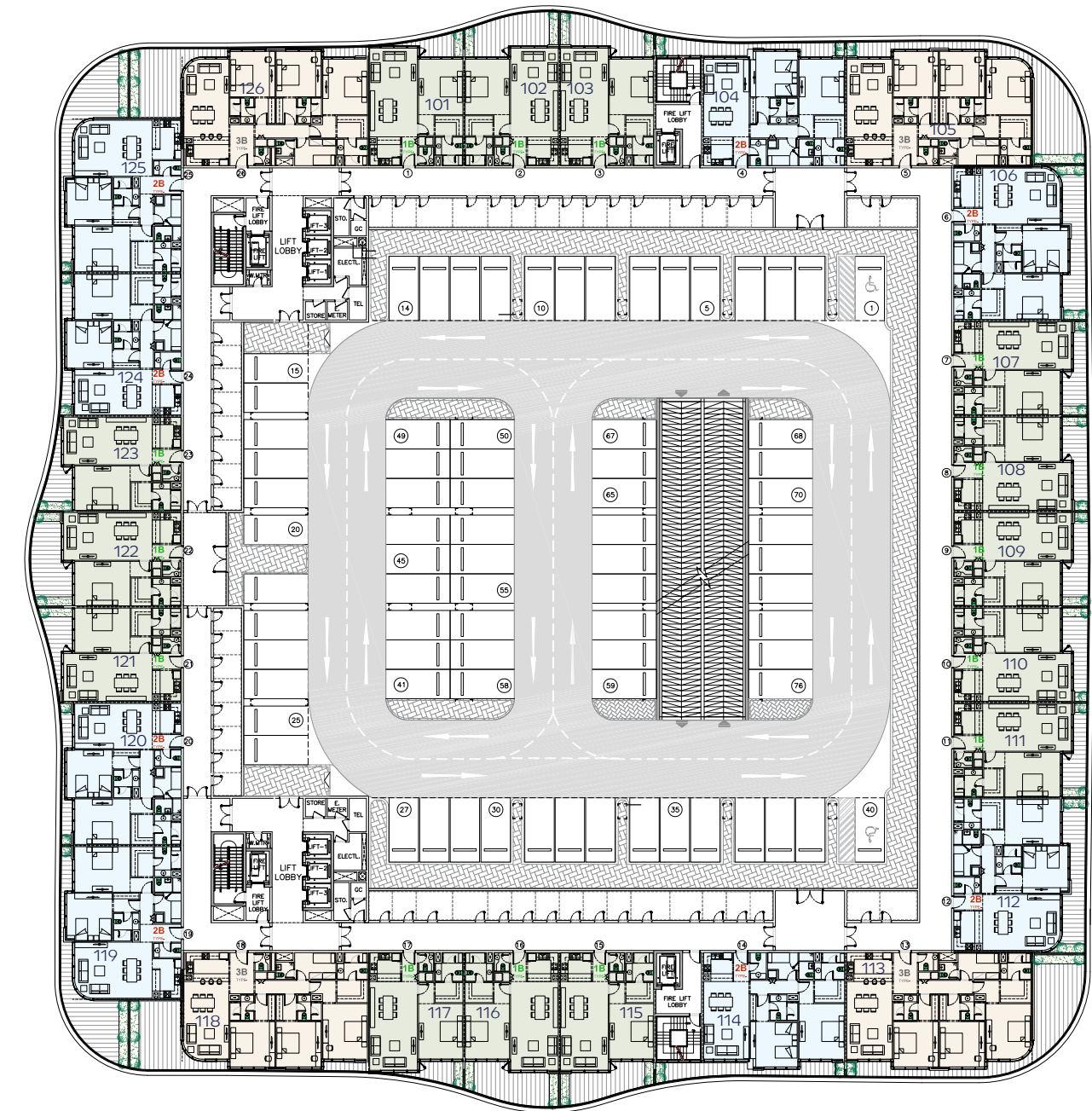


2 Bedroom Duplex      4 Bedroom Duplex



مخطط المنصة 1  
Podium 1 Floor Plan

Floor	Apartment No.	Apartment Type	Apartment Area	Balcony	Total Unit Area
Podium 1	Apartment 101	1BD	90.2	12.6	102.8
	Apartment 102	1BD	90.2	30.6	120.8
	Apartment 103	1BD	90.2	26.9	117.1
	Apartment 104	2BD	130.2	28	158.2
	Apartment 105	3BD	173.6	63.8	237.4
	Apartment 106	2BD	140	33.5	173.5
	Apartment 107	1BD	90.2	18.4	108.6
	Apartment 108	1BD	90.2	19.2	109.4
	Apartment 109	1BD	90.2	19.5	109.7
	Apartment 110	1BD	90.2	19.1	109.3
	Apartment 111	1BD	90.2	18.3	108.5
	Apartment 112	2BD	140	33.5	173.5
	Apartment 113	3BD	173.6	63.8	237.4
	Apartment 114	2BD	130.2	28	158.2
	Apartment 115	1BD	90.2	27	117.2
	Apartment 116	1BD	90.2	30.6	120.8
	Apartment 117	1BD	90.2	12.6	102.8
	Apartment 118	3BD	171.9	42.4	214.3
	Apartment 119	2BD	141.3	48.6	189.9
	Apartment 120	2BD	131.7	15.2	146.9
	Apartment 121	1BD	90.2	16.8	107
	Apartment 122	1BD	90.2	30.5	120.7
	Apartment 123	1BD	90.2	16.8	107
	Apartment 124	2BD	131.7	15.5	147.2
	Apartment 125	2BD	141.3	48.6	189.9
	Apartment 126	3BD	171.9	42.5	214.4
	Total		3040.2	762.3	3802.5

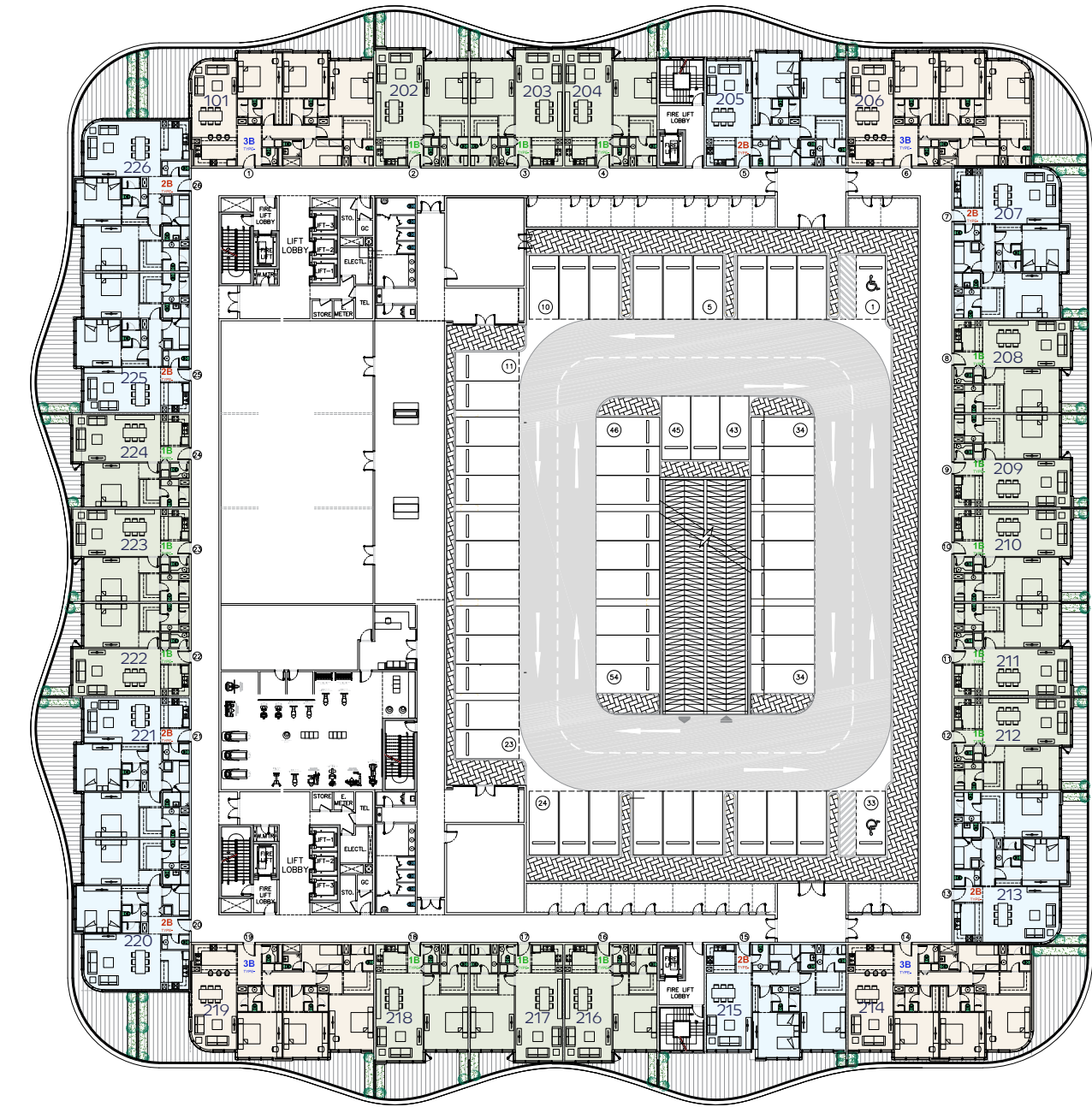


1 Bedroom 2 Bedroom 3 Bedroom



مخطط المنصة 2  
Podium 2 Floor Plan

Floor	Apartment No.	Apartment Type	Apartment Area	Balcony	Total Unit Area
Podium 2	Apartment 101	1BD	90.2	32	122.2
	Apartment 202	1BD	90.2	12.5	102.7
	Apartment 203	1BD	90.2	15.4	105.6
	Apartment 204	2BD	130.2	58.7	188.9
	Apartment 205	3BD	173.6	57.3	230.9
	Apartment 206	2BD	140	37	177
	Apartment 207	1BD	90.2	19.7	109.9
	Apartment 208	1BD	90.2	19.7	109.9
	Apartment 209	1BD	90.2	19.7	109.9
	Apartment 210	1BD	90.2	19.7	109.9
	Apartment 211	1BD	90.2	19.7	109.9
	Apartment 212	2BD	140	37.2	177.2
	Apartment 213	3BD	173.6	57.3	230.9
	Apartment 214	2BD	130.2	58.7	188.9
	Apartment 215	1BD	90.2	15.3	105.5
	Apartment 216	1BD	90.2	12.5	102.7
	Apartment 217	1BD	90.2	32	122.2
	Apartment 218	3BD	171.9	67.6	239.5
	Apartment 219	2BD	141.3	45.1	186.4
	Apartment 220	2BD	131.7	44.3	176
	Apartment 221	1BD	90.2	19.7	109.9
	Apartment 222	1BD	90.2	7.2	97.4
	Apartment 223	1BD	90.2	19.7	109.9
	Apartment 224	2BD	131.7	44	175.7
	Apartment 225	2BD	141.3	45	186.3
	Apartment 226	3BD	171.9	67.6	239.5
		Total	3040.2	884.6	3924.8



1 Bedroom 2 Bedroom 3 Bedroom



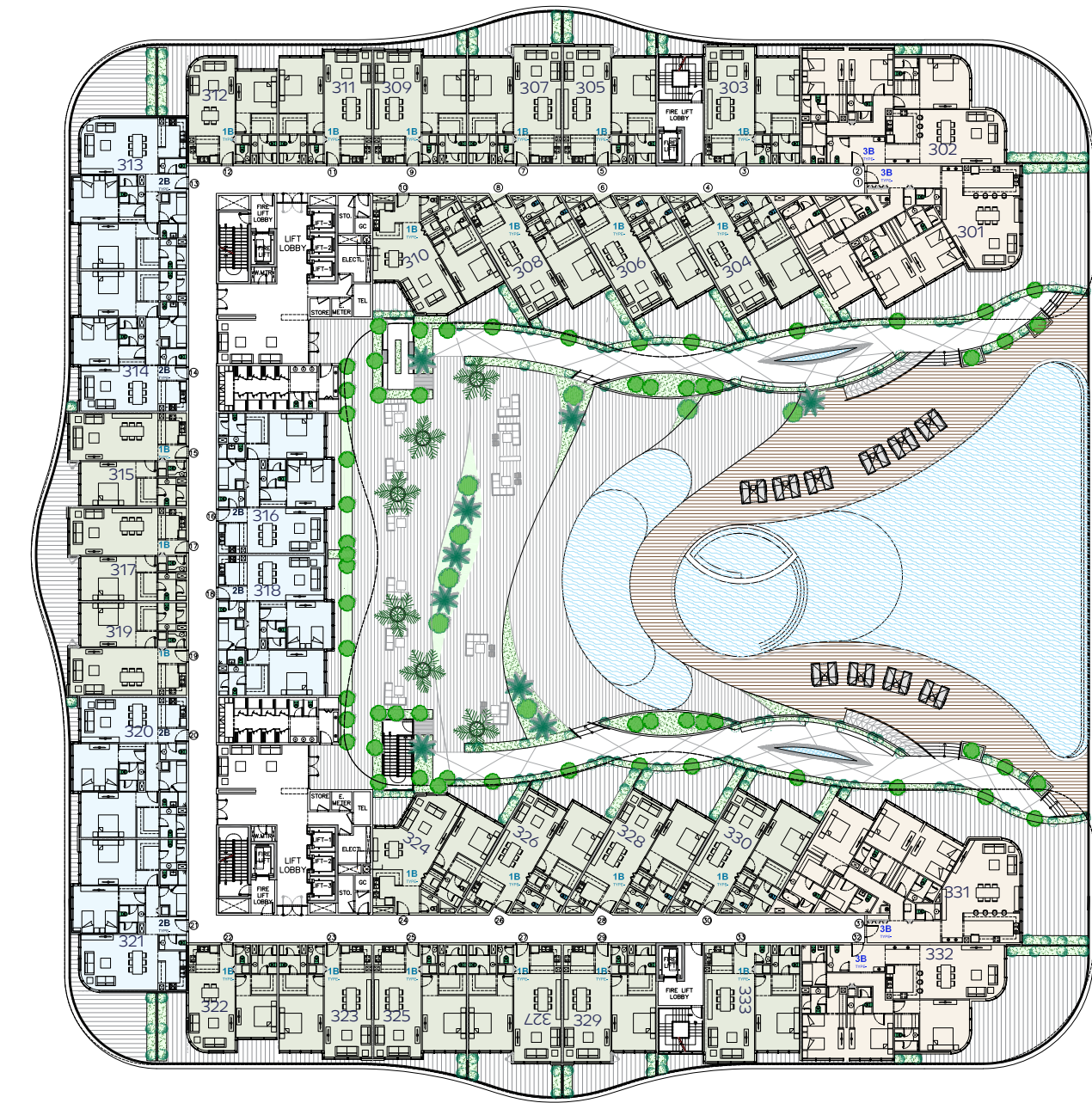
*Milos*





الطابق 3  
3<sup>rd</sup> Floor Plan

Floor	Apartment No.	Apartment Type	Apartment Area	Balcony	Total Unit Area
3 <sup>rd</sup>	Apartment 301	3BD	207.2	116.31	323.51
	Apartment 302	3BD	175.5	102.97	278.47
	Apartment 303	1BD	92.8	16.13	108.93
	Apartment 304	1BD	91.7	21.37	113.07
	Apartment 305	1BD	90.2	26.4	116.6
	Apartment 306	1BD	91.7	30.83	122.53
	Apartment 307	1BD	90.2	29.01	119.21
	Apartment 308	1BD	91.7	29.3	121
	Apartment 309	1BD	88.3	14.1	102.9
	Apartment 310	1BD	98.2	22.9	121.1
	Apartment 311	1BD	88.3	9.58	97.88
	Apartment 312	1BD	77	49.1	126.1
	Apartment 313	2BD	141.2	43.2	184.4
	Apartment 314	2BD	131.7	13.3	145
	Apartment 315	1BD	90.2	17	107.2
	Apartment 316	2BD	131.7	38.5	170.2
	Apartment 317	1BD	90.2	30.6	120.8
	Apartment 318	2BD	131.7	38.1	169.8
	Apartment 319	1BD	90.2	17	107.2
	Apartment 320	2BD	131.4	13.3	144.7
	Apartment 321	2BD	141.2	43.2	184.4
	Apartment 322	1BD	77	49.1	126.1
	Apartment 323	1BD	88.3	9.58	97.88
	Apartment 324	1BD	98.2	22.9	121.1
	Apartment 325	1BD	88.3	14.1	102.4
	Apartment 326	1BD	91.7	29.3	121
	Apartment 327	1BD	90.2	29.1	119.3
	Apartment 328	1BD	91.7	30.83	122.53
	Apartment 329	1BD	90.2	26.4	116.6
	Apartment 330	1BD	91.7	21.37	113.07
	Apartment 331	1BD	92.8	16.13	108.93
	Apartment 332	3BD	175.5	103	278.5
	Apartment 333	3BD	207.2	115.8	323
	Total		3645.1	1189.81	4834.91

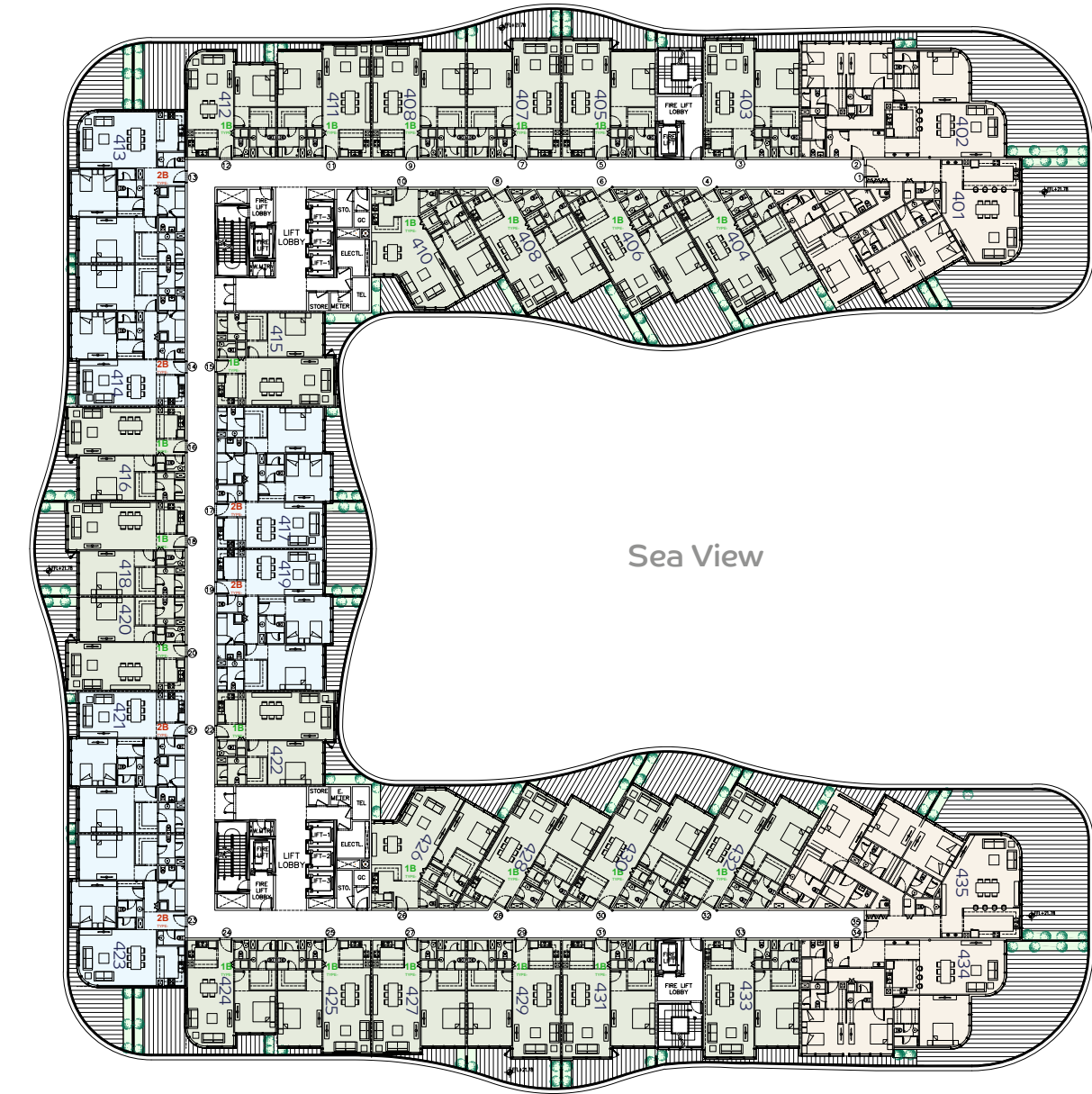


1 Bedroom
  2 Bedroom
  3 Bedroom



الطابق 4  
4<sup>th</sup> Floor Plan

Floor	Apartment No.	Apartment Type	Apartment Area	Balcony	Total Unit Area
4 <sup>th</sup>	Apartment 401	3BD	208.5	146.5	355
	Apartment 402	3BD	175.5	111.6	287.1
	Apartment 403	1BD	92.4	17.6	110
	Apartment 404	1BD	91.7	22.2	113.9
	Apartment 405	1BD	90.2	23.3	113.5
	Apartment 406	1BD	91.7	40.1	131.8
	Apartment 407	1BD	90.2	25.9	116.1
	Apartment 408	1BD	91.7	32.3	124
	Apartment 409	1BD	88.3	11.2	99.5
	Apartment 410	1BD	98.2	27.6	125.8
	Apartment 411	1BD	88.3	6.4	94.7
	Apartment 412	1BD	77	44.5	121.5
	Apartment 413	2BD	141.2	42.7	183.9
	Apartment 414	2BD	131.7	13.2	144.9
	Apartment 415	1BD	90.7	11.6	102.3
	Apartment 416	1BD	90.2	17	107.2
	Apartment 417	2BD	131.7	38.5	170.2
	Apartment 418	1BD	90.2	30.6	120.8
	Apartment 419	2BD	131.7	38.51	170.21
	Apartment 420	1BD	90.2	17	107.2
	Apartment 421	2BD	90.7	11.6	102.3
	Apartment 422	1BD	131.7	13.2	144.9
	Apartment 423	2BD	141.2	42.6	183.8
	Apartment 424	1BD	77	44.5	121.5
	Apartment 425	1BD	88.3	6.4	94.7
	Apartment 426	1BD	98.2	27.6	125.8
	Apartment 427	1BD	88.3	11.2	99.5
	Apartment 428	1BD	91.7	32.3	124
	Apartment 429	1BD	90.2	25.9	116.1
	Apartment 430	1BD	91.7	40.1	131.8
	Apartment 431	1BD	90.2	23.3	113.5
	Apartment 432	1BD	91.7	22.2	113.9
	Apartment 433	1BD	92.4	17.7	110.1
	Apartment 434	3BD	175.5	111.6	287.1
	Apartment 435	3BD	208.5	146.5	355
	Total		3828.6	1295.01	5123.61

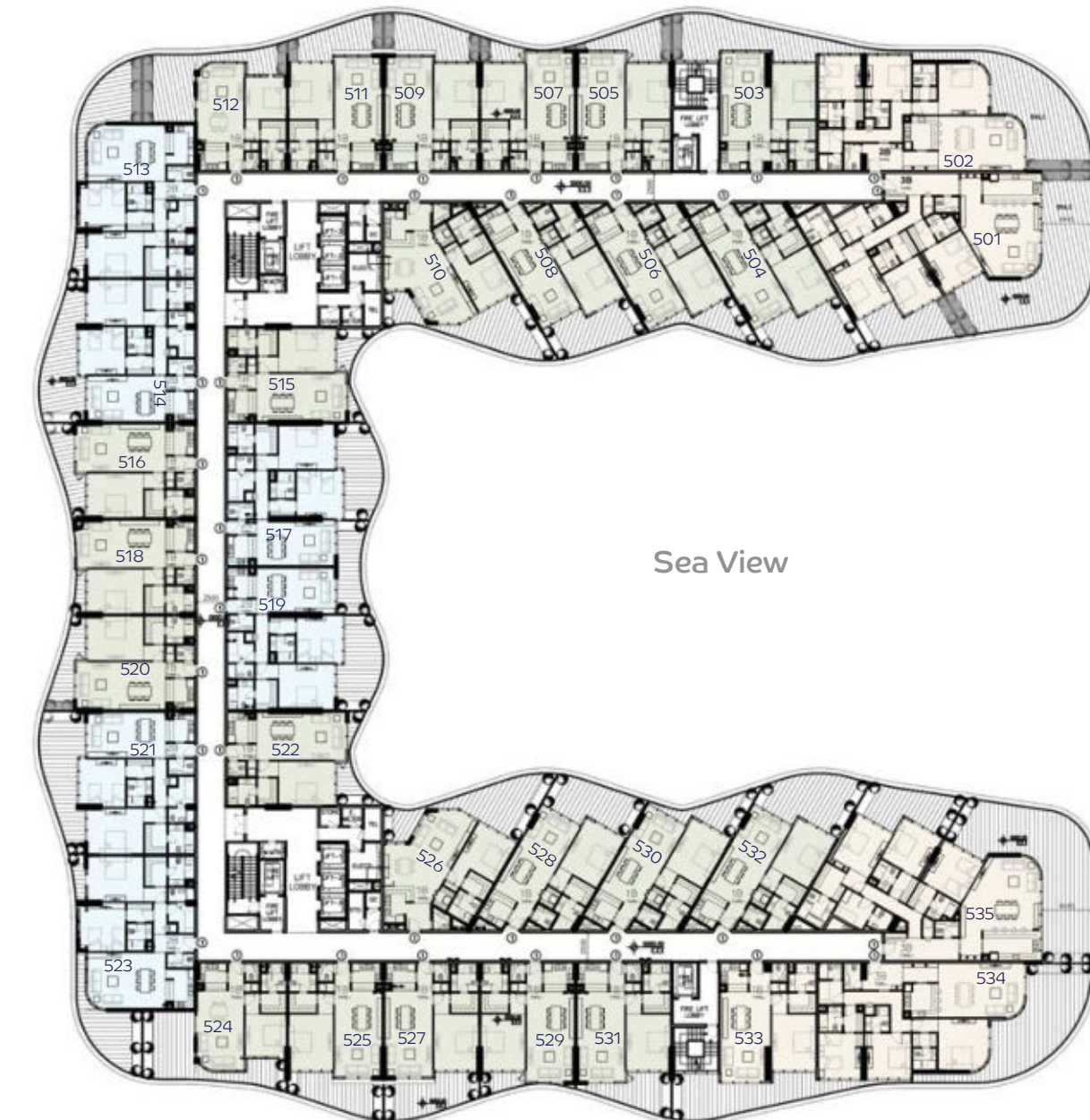


1 Bedroom
  2 Bedroom
  3 Bedroom



الطابق 5  
5<sup>th</sup> Floor Plan

Floor	Apartment No.	Apartment Type	Apartment Area	Balcony	Total Unit Area
5 <sup>th</sup>	Apartment 501	3BD	208.5	132	340.5
	Apartment 502	3BD	175.5	96.3	271.8
	Apartment 503	1BD	92.4	45.7	138.1
	Apartment 504	1BD	91.7	41.3	133
	Apartment 505	1BD	90.2	23.8	114
	Apartment 506	1BD	91.7	21.1	112.8
	Apartment 507	1BD	90.2	11.4	101.6
	Apartment 508	1BD	91.7	32.7	124.4
	Apartment 509	1BD	88.3	32.2	120.5
	Apartment 510	1BD	98.2	49.4	147.6
	Apartment 511	1BD	88.3	28.7	117
	Apartment 512	1BD	77	48.8	125.8
	Apartment 513	2BD	141.2	44.8	186
	Apartment 514	2BD	131.7	44.4	176.1
	Apartment 515	1BD	90.7	16.9	107.6
	Apartment 516	1BD	90.2	20.4	110.6
	Apartment 517	2BD	131.7	44.5	176.2
	Apartment 518	1BD	90.2	8.9	99.1
	Apartment 519	2BD	131.7	44.5	176.2
	Apartment 520	1BD	90.2	20.1	110.3
	Apartment 521	2BD	90.7	16.9	107.6
	Apartment 522	1BD	131.7	44.4	176.1
	Apartment 523	2BD	141.2	44.8	186
	Apartment 524	1BD	77	48.8	125.8
	Apartment 525	1BD	88.3	28.7	117
	Apartment 526	1BD	98.2	49.4	147.6
	Apartment 527	1BD	88.3	32.2	120.5
	Apartment 528	1BD	91.7	32.7	124.4
	Apartment 529	1BD	90.2	11.4	101.6
	Apartment 530	1BD	91.7	21.1	112.8
	Apartment 531	1BD	90.2	23.8	114
	Apartment 532	1BD	91.7	41.3	133
	Apartment 533	1BD	92.4	45.7	138.1
	Apartment 534	3BD	175.5	96.3	271.8
	Apartment 535	3BD	208.5	132	340.5
	Total		3828.6	1477.4	5306



1 Bedroom
  2 Bedroom
  3 Bedroom



الطابق 6  
6<sup>th</sup> Floor Plan

Floor	Apartment No.	Apartment Type	Apartment Area	Balcony	Total Unit Area
6 <sup>th</sup>	Apartment 601	3BD	208.5	103.3	311.8
	Apartment 602	3BD	175.5	77.4	252.9
	Apartment 603	1BD	92.4	17.6	110
	Apartment 604	1BD	91.7	22.2	113.9
	Apartment 605	1BD	90.2	23.3	113.5
	Apartment 606	1BD	91.7	40.1	131.8
	Apartment 607	1BD	90.2	25.9	116.1
	Apartment 608	1BD	91.7	32.3	124
	Apartment 609	1BD	88.3	11.2	99.5
	Apartment 610	1BD	98.2	27.6	125.8
	Apartment 611	1BD	88.3	6.9	95.2
	Apartment 612	1BD	77	45.5	122.5
	Apartment 613	2BD	141.2	42.7	183.9
	Apartment 614	2BD	131.7	13.4	145.1
	Apartment 615	1BD	90.7	11.6	102.3
	Apartment 616	1BD	90.2	17	107.2
	Apartment 617	2BD	131.7	38.51	170.21
	Apartment 618	1BD	90.2	30.6	120.8
	Apartment 619	2BD	131.7	38.51	170.21
	Apartment 620	1BD	90.2	17	107.2
	Apartment 621	2BD	90.7	11.6	102.3
	Apartment 622	1BD	131.7	13.4	145.1
	Apartment 623	2BD	141.2	42.7	183.9
	Apartment 624	1BD	77	45.4	122.4
	Apartment 625	1BD	88.3	6.4	94.7
	Apartment 626	1BD	98.2	27.6	125.8
	Apartment 627	1BD	88.3	11.2	99.5
	Apartment 628	1BD	91.7	32.3	124
	Apartment 629	1BD	90.2	25.9	116.1
	Apartment 630	1BD	91.7	40.1	131.8
	Apartment 631	1BD	90.2	23.3	113.5
	Apartment 632	1BD	91.7	22.2	113.9
	Apartment 633	1BD	92.4	17.7	110.1
	Apartment 634	3BD	175.5	77.4	252.9
	Apartment 635	3BD	208.5	103.3	311.8
	Total		3828.6	1143.12	4971.72



1 Bedroom
  2 Bedroom
  3 Bedroom



الطابق 7  
7<sup>th</sup> Floor Plan

Floor	Apartment No.	Apartment Type	Apartment Area	Balcony	Total Unit Area
7 <sup>th</sup>	Apartment 701	3BD	208.5	88.3	296.8
	Apartment 702	3BD	175.5	61.7	237.2
	Apartment 703	1BD	92.4	45.7	138.1
	Apartment 704	1BD	91.7	41.3	133
	Apartment 705	1BD	90.2	23.8	114
	Apartment 706	1BD	91.7	21.1	112.8
	Apartment 707	1BD	90.2	11.4	101.6
	Apartment 708	1BD	91.7	32.7	124.4
	Apartment 709	1BD	88.3	32.2	120.5
	Apartment 710	1BD	98.2	49.4	147.6
	Apartment 711	1BD	88.3	28.7	117
	Apartment 712	1BD	77	48.8	125.8
	Apartment 713	2BD	141.2	44.8	186
	Apartment 714	2BD	131.7	44.4	176.1
	Apartment 715	1BD	90.7	16.9	107.6
	Apartment 716	1BD	90.2	20.4	110.6
	Apartment 717	2BD	131.7	44.5	176.2
	Apartment 718	1BD	90.2	8.9	99.1
	Apartment 719	2BD	131.7	44.5	176.2
	Apartment 720	1BD	90.2	20.1	110.3
	Apartment 721	2BD	90.7	16.9	107.6
	Apartment 722	1BD	131.7	44.4	176.1
	Apartment 723	2BD	141.2	44.8	186
	Apartment 724	1BD	77	48.8	125.8
	Apartment 725	1BD	88.3	28.7	117
	Apartment 726	1BD	98.2	49.4	147.6
	Apartment 727	1BD	88.3	32.2	120.5
	Apartment 728	1BD	91.7	32.7	124.4
	Apartment 729	1BD	90.2	11.4	101.6
	Apartment 730	1BD	91.7	21.1	112.8
	Apartment 731	1BD	90.2	23.8	114
	Apartment 732	1BD	91.7	41.3	133
	Apartment 733	1BD	92.4	45.7	138.1
	Apartment 734	3BD	175.5	61.7	237.2
	Apartment 735	3BD	208.5	88.3	296.8
	Total		3828.6	1320.8	5149.4



1 Bedroom
  2 Bedroom
  3 Bedroom



Milos





الطابق 8  
8<sup>th</sup> Floor Plan

Floor	Apartment No.	Apartment Type	Apartment Area	Balcony	Total Unit Area
8 <sup>th</sup>	Apartment 801	3BD	185.4	137.4	322.8
	Apartment 802	3BD	211	104.5	315.5
	Apartment 803	1BD	91.7	22.2	113.9
	Apartment 804	1BD	90.2	23.3	113.5
	Apartment 805	1BD	91.7	40.1	131.8
	Apartment 806	1BD	90.2	25.9	116.1
	Apartment 807	1BD	91.7	32.3	124
	Apartment 808	1BD	90.1	11.2	101.3
	Apartment 809	1BD	98.2	27.6	125.8
	Apartment 810	1BD	90.1	6.4	96.5
	Apartment 811	1BD	77	44.5	121.5
	Apartment 812	2BD	141.2	42.7	183.9
	Apartment 813	2BD	131.7	13.4	145.1
	Apartment 814	1BD	90.7	11.6	102.3
	Apartment 815	1BD	90.2	17	107.2
	Apartment 816	2BD	131.7	38.51	170.21
	Apartment 817	1BD	90.2	30.6	120.8
	Apartment 818	2BD	131.7	38.51	170.21
	Apartment 819	1BD	90.2	17	107.2
	Apartment 820	2BD	90.7	11.6	102.3
	Apartment 821	1BD	131.7	13.4	145.1
	Apartment 822	2BD	141.2	42.5	183.7
	Apartment 823	1BD	77	44.5	121.5
	Apartment 824	1BD	90.1	6.4	96.5
	Apartment 825	1BD	98.2	27.6	125.8
	Apartment 826	1BD	90.1	11.2	101.3
	Apartment 827	1BD	91.7	32.3	124
	Apartment 828	1BD	90.2	25.9	116.1
	Apartment 829	1BD	91.7	40.1	131.8
	Apartment 830	1BD	90.2	23.3	113.5
	Apartment 831	1BD	91.7	22.2	113.9
	Apartment 832	3BD	211	104.5	315.5
	Apartment 833	3BD	185.4	137.4	322.8
Total			3675.8	1227.62	4903.42

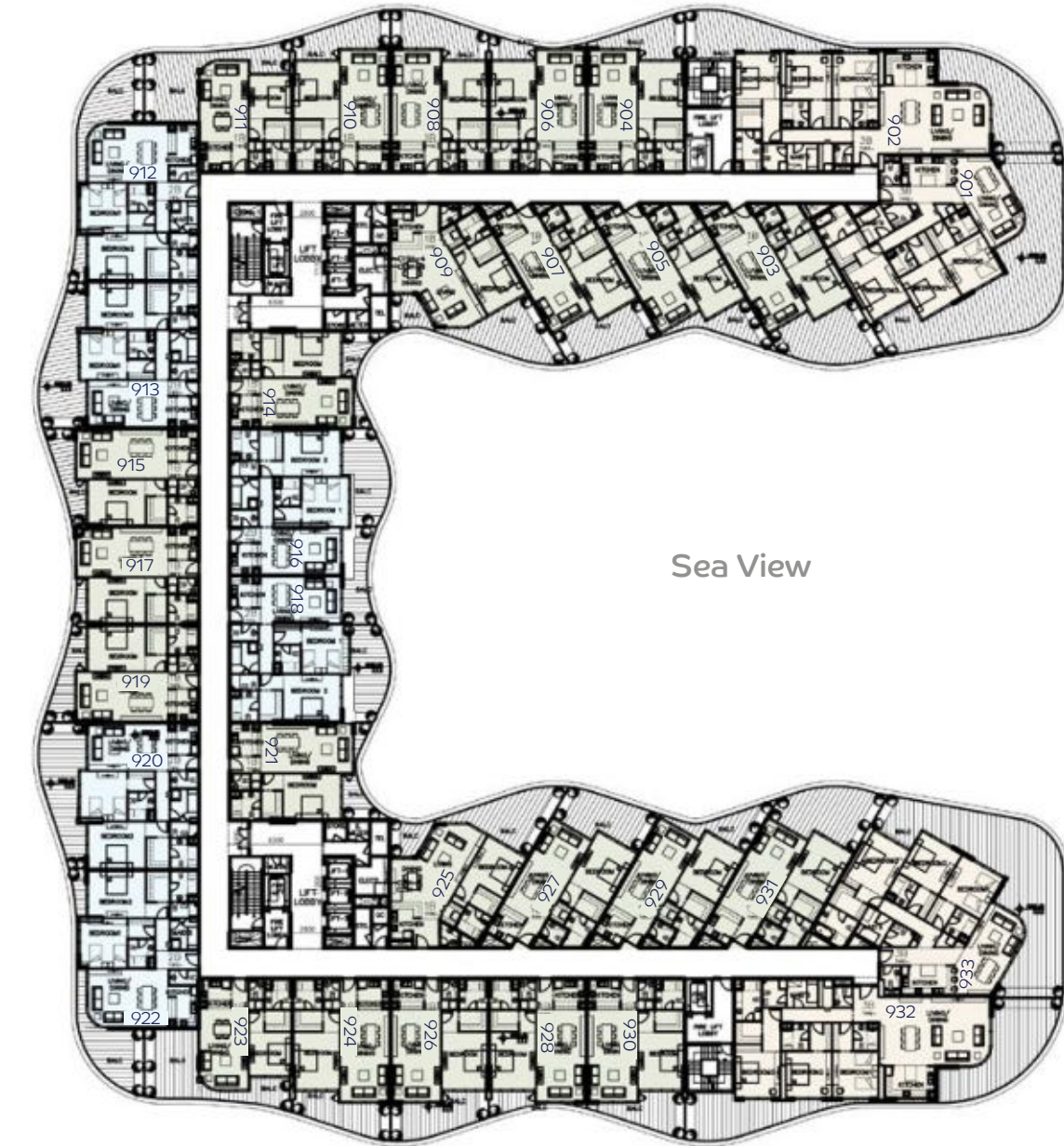


1 Bedroom
  2 Bedroom
  3 Bedroom



الطابق 9  
9<sup>th</sup> Floor Plan

Floor	Apartment No.	Apartment Type	Apartment Area	Balcony	Total Unit Area
9 <sup>th</sup>	Apartment 901	3BD	185.4	118.9	304.3
	Apartment 902	3BD	211	118.9	329.3
	Apartment 903	1BD	91.7	41.3	133
	Apartment 904	1BD	90.2	23.8	114
	Apartment 905	1BD	91.7	21.1	112.8
	Apartment 906	1BD	90.2	11.35	101.55
	Apartment 907	1BD	91.7	32.7	124.4
	Apartment 908	1BD	90.1	30.3	120.4
	Apartment 909	1BD	98.2	49.4	147.6
	Apartment 910	1BD	90.1	26.8	116.9
	Apartment 911	1BD	77	48.8	125.8
	Apartment 912	2BD	141.2	44.8	186
	Apartment 913	2BD	131.7	44.4	176.1
	Apartment 914	1BD	90.7	16.86	107.56
	Apartment 915	1BD	90.2	20.4	110.6
	Apartment 916	2BD	131.7	44.5	176.2
	Apartment 917	1BD	90.2	8.9	99.1
	Apartment 918	2BD	131.7	44.5	176.2
	Apartment 919	1BD	90.2	20.02	110.22
	Apartment 920	2BD	90.7	16.9	107.6
	Apartment 921	1BD	131.7	44.4	176.1
	Apartment 922	2BD	141.2	44.8	186
	Apartment 923	1BD	77	48.8	125.8
	Apartment 924	1BD	90.1	26.8	116.9
	Apartment 925	1BD	98.2	49.4	147.6
	Apartment 926	1BD	90.1	30.3	120.4
	Apartment 927	1BD	91.7	32.7	124.4
	Apartment 928	1BD	90.2	11.4	101.6
	Apartment 929	1BD	91.7	21.1	112.8
	Apartment 930	1BD	90.2	23.8	114
	Apartment 931	1BD	91.7	41.3	133
	Apartment 932	3BD	211	118.3	329.3
	Apartment 933	3BD	185.4	118.9	304.3
	Total		3675.8	1396.03	5071.83

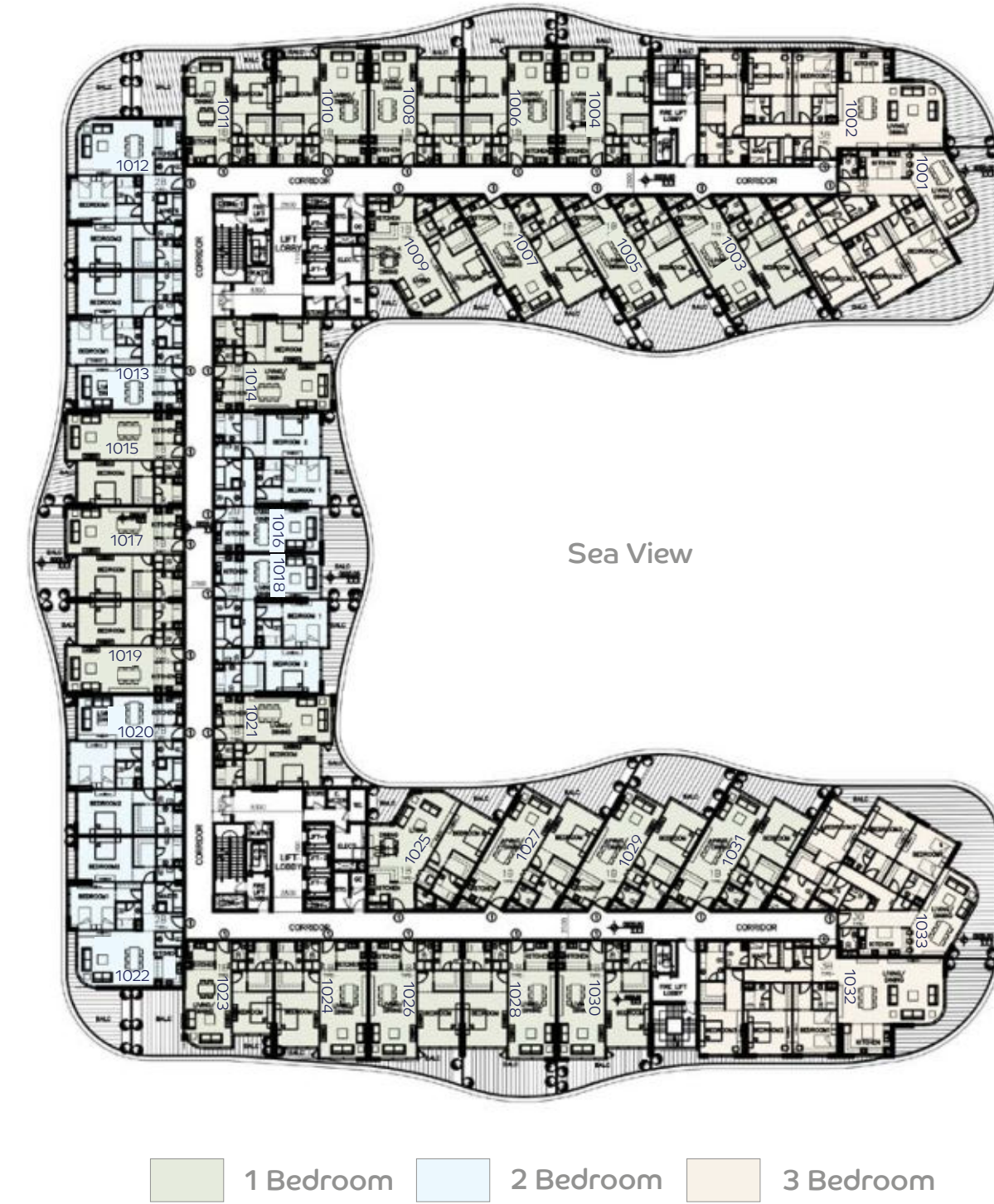


1 Bedroom
  2 Bedroom
  3 Bedroom



الطابق 10  
10<sup>th</sup> Floor Plan

Floor	Apartment No.	Apartment Type	Apartment Area	Balcony	Total Unit Area
10 <sup>th</sup>	Apartment 1001	3BD	185.4	87.9	273.3
	Apartment 1002	3BD	211	73.6	284.6
	Apartment 1003	1BD	91.7	22.2	113.9
	Apartment 1004	1BD	90.2	23.3	113.5
	Apartment 1005	1BD	91.7	40.1	131.5
	Apartment 1006	1BD	90.2	25.9	116.1
	Apartment 1007	1BD	91.7	32.3	124
	Apartment 1008	1BD	90.1	11.2	101.3
	Apartment 1009	1BD	98.2	27.6	125.8
	Apartment 1010	1BD	90.1	6.8	96.9
	Apartment 1011	1BD	77	45.4	122.4
	Apartment 1012	2BD	141.2	42.7	183.9
	Apartment 1013	2BD	131.7	13.4	145.1
	Apartment 1014	1BD	90.7	11.6	102.3
	Apartment 1015	1BD	90.2	17	107.2
	Apartment 1016	2BD	131.7	38.51	170.21
	Apartment 1017	1BD	90.2	30.6	120.8
	Apartment 1018	2BD	131.7	38.51	170.21
	Apartment 1019	1BD	90.2	17	107.2
	Apartment 1020	2BD	90.7	11.6	102.3
	Apartment 1021	1BD	131.7	13.4	145.1
	Apartment 1022	2BD	141.2	42.5	183.7
	Apartment 1023	1BD	77	45.4	122.4
	Apartment 1024	1BD	90.1	6.4	96.5
	Apartment 1025	1BD	98.2	27.6	125.8
	Apartment 1026	1BD	90.1	11.2	101.3
	Apartment 1027	1BD	91.7	32.3	124
	Apartment 1028	1BD	90.2	25.9	116.1
	Apartment 1029	1BD	91.7	40.1	131.8
	Apartment 1030	1BD	90.2	23.3	113.5
	Apartment 1031	1BD	91.7	22.2	113.9
	Apartment 1032	3BD	211	73.6	284.6
	Apartment 1033	3BD	185.4	87.9	273.3
	Total		3675.8	1069.02	4744.82





الطابق 11  
11<sup>th</sup> Floor Plan

Floor	Apartment No.	Apartment Type	Apartment Area	Balcony	Total Unit Area
11 <sup>th</sup>	Apartment 1101	3BD	185.4	70.8	256.2
	Apartment 1102	3BD	211	88.3	299.3
	Apartment 1103	1BD	91.7	41.3	133
	Apartment 1104	1BD	90.2	23.8	114
	Apartment 1105	1BD	91.7	21.1	112.8
	Apartment 1106	1BD	90.2	11.35	101.55
	Apartment 1107	1BD	91.7	32.7	124.4
	Apartment 1108	1BD	90.1	30.3	120.4
	Apartment 1109	1BD	98.2	49.4	147.6
	Apartment 1110	1BD	90.1	26.8	116.9
	Apartment 1111	1BD	77	48.8	125.8
	Apartment 1112	2BD	141.2	44.8	186
	Apartment 1113	2BD	131.7	13.4	176.1
	Apartment 1114	1BD	90.7	16.86	107.56
	Apartment 1115	1BD	90.2	20.4	110.6
	Apartment 1116	2BD	131.7	44.5	176.2
	Apartment 1117	1BD	90.2	8.9	99.1
	Apartment 1118	2BD	131.7	44.5	176.2
	Apartment 1119	1BD	90.2	20.02	110.22
	Apartment 1120	2BD	90.7	16.9	107.6
	Apartment 1121	1BD	131.7	44.4	176.1
	Apartment 1122	2BD	141.2	44.8	186
	Apartment 1123	1BD	77	48.8	125.8
	Apartment 1124	1BD	90.1	26.8	116.9
	Apartment 1125	1BD	98.2	49.4	147.6
	Apartment 1126	1BD	90.1	30.3	120.4
	Apartment 1127	1BD	91.7	32.7	124.4
	Apartment 1128	1BD	90.2	11.4	101.6
	Apartment 1129	1BD	91.7	21.1	112.8
	Apartment 1130	1BD	90.2	23.8	114
	Apartment 1131	1BD	91.7	41.3	133
	Apartment 1132	3BD	211	88.3	299.3
	Apartment 1133	3BD	185.4	70.8	256.2
Total			3675.8	1239.83	4915.63



1 Bedroom
  2 Bedroom
  3 Bedroom



أسلوب 12  
12<sup>th</sup> Floor Plan

Floor	Apartment No.	Apartment Type	Apartment Area	Balcony	Total Unit Area
12 <sup>th</sup>	Apartment 1201	3BD	203.8	70.8	256.2
	Apartment 1202	3BD	183.6	88.3	299.3
	Apartment 1203	1BD	90.2	41.3	133
	Apartment 1204	1BD	91.7	23.8	114
	Apartment 1205	1BD	90.2	21.1	112.8
	Apartment 1206	1BD	91.7	11.35	101.55
	Apartment 1207	1BD	90.1	32.7	124.4
	Apartment 1208	1BD	98.2	30.3	120.4
	Apartment 1209	1BD	90.1	49.4	147.6
	Apartment 1210	1BD	77	26.8	116.9
	Apartment 1211	2BD	141.2	48.8	125.8
	Apartment 1212	2BD	131.7	44.8	186
	Apartment 1213	1BD	90.7	13.4	176.1
	Apartment 1214	1BD	90.2	16.86	107.56
	Apartment 1215	2BD	131.7	20.4	110.6
	Apartment 1216	1BD	90.2	44.5	176.2
	Apartment 1217	2BD	131.7	8.9	99.1
	Apartment 1218	1BD	90.2	44.5	176.2
	Apartment 1219	2BD	90.7	20.02	110.22
	Apartment 1220	1BD	131.7	16.9	107.6
	Apartment 1221	2BD	141.2	44.4	176.1
	Apartment 1222	1BD	77	44.8	186
	Apartment 1223	1BD	90.1	48.8	125.8
	Apartment 1224	1BD	98.2	26.8	116.9
	Apartment 1225	1BD	90.1	49.4	147.6
	Apartment 1226	1BD	90.7	30.3	120.4
	Apartment 1227	1BD	90.2	32.7	124.4
	Apartment 1228	1BD	91.7	11.4	101.6
	Apartment 1229	1BD	90.2	21.1	112.8
	Apartment 1230	3BD	183.6	23.8	114
	Apartment 1231	3BD	203.8	41.3	133
	Total		3474.4	1190.31	4664.71





الطابق 13  
13<sup>th</sup> Floor Plan

Floor	Apartment No.	Apartment Type	Apartment Area	Balcony	Total Unit Area
13 <sup>th</sup>	Apartment 1301	3BD	203.8	120.2	324
	Apartment 1302	3BD	183.6	110.5	294.1
	Apartment 1303	1BD	90.2	23.8	114
	Apartment 1304	1BD	91.7	23.6	115.3
	Apartment 1305	1BD	90.2	11.4	101.6
	Apartment 1306	1BD	91.7	32.7	124.4
	Apartment 1307	1BD	90.1	30.3	120.4
	Apartment 1308	1BD	98.2	49.4	147.6
	Apartment 1309	1BD	90.1	26.8	116.9
	Apartment 1310	1BD	77	48.8	125.8
	Apartment 1311	2BD	141.2	44.8	186
	Apartment 1312	2BD	131.7	44.4	176.1
	Apartment 1313	1BD	90.7	16.86	107.56
	Apartment 1314	1BD	90.2	20.02	110.22
	Apartment 1315	2BD	131.7	44.5	176.2
	Apartment 1316	1BD	90.2	8.9	99.1
	Apartment 1317	2BD	131.7	44.5	176.2
	Apartment 1318	1BD	90.2	20.02	110.22
	Apartment 1319	2BD	90.7	16.86	107.56
	Apartment 1320	1BD	131.7	44.4	176.1
	Apartment 1321	2BD	141.2	44.8	186
	Apartment 1322	1BD	77	44.8	125.8
	Apartment 1323	1BD	90.1	26.8	116.9
	Apartment 1324	1BD	98.2	49.4	147.6
	Apartment 1325	1BD	90.1	30.3	120.4
	Apartment 1326	1BD	90.7	32.7	124.4
	Apartment 1327	1BD	90.2	11.4	101.6
	Apartment 1328	1BD	91.7	23.5	115.2
	Apartment 1329	1BD	90.2	23.8	114
	Apartment 1330	3BD	183.6	110	293.6
	Apartment 1331	3BD	203.8	120.1	323.9
	Total		3474.4	1304.36	4773.76



1 Bedroom    2 Bedroom    3 Bedroom

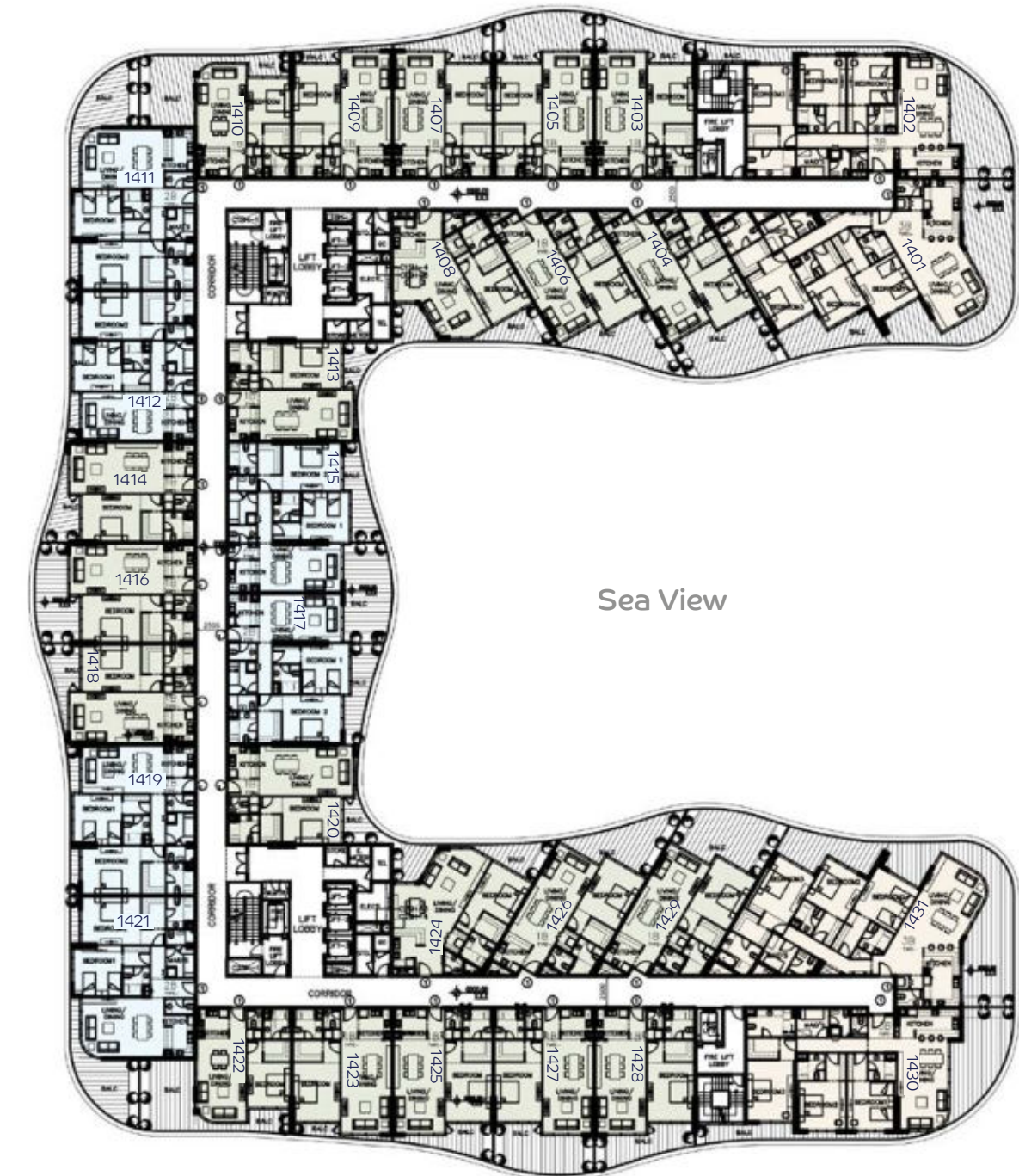






الطابق 14  
14<sup>th</sup> Floor Plan

Floor	Apartment No.	Apartment Type	Apartment Area	Balcony	Total Unit Area
14 <sup>th</sup>	Apartment 1401	3BD	203.8	98.8	302.6
	Apartment 1402	3BD	183.6	71.5	255.1
	Apartment 1403	1BD	90.2	23.3	113.5
	Apartment 1404	1BD	91.7	40.1	131.8
	Apartment 1405	1BD	90.2	25.9	116.1
	Apartment 1406	1BD	91.7	32.3	124
	Apartment 1407	1BD	90.1	9.4	99.5
	Apartment 1408	1BD	98.2	27.6	125.8
	Apartment 1409	1BD	90.1	5	95.1
	Apartment 1410	1BD	77	45.4	122.4
	Apartment 1411	2BD	141.2	42.7	183.9
	Apartment 1412	2BD	131.7	13.4	145.1
	Apartment 1413	1BD	90.7	11.6	102.3
	Apartment 1414	1BD	90.2	17	107.2
	Apartment 1415	2BD	131.7	38.5	170.2
	Apartment 1416	1BD	90.2	30.6	120.8
	Apartment 1417	2BD	131.7	38.51	170.21
	Apartment 1418	1BD	90.2	17	107.2
	Apartment 1419	2BD	90.7	11.6	102.3
	Apartment 1420	1BD	131.7	13.4	145.1
	Apartment 1421	2BD	141.2	42.5	183.7
	Apartment 1422	1BD	77	45.4	122.4
	Apartment 1423	1BD	90.1	5	95.1
	Apartment 1424	1BD	98.2	27.6	125.8
	Apartment 1425	1BD	90.1	9.4	99.5
	Apartment 1426	1BD	90.7	32.3	124
	Apartment 1427	1BD	90.2	25.9	116.1
	Apartment 1428	1BD	91.7	40.1	131.8
	Apartment 1429	1BD	90.2	23.3	113.5
	Apartment 1430	3BD	183.6	71.5	255.1
	Apartment 1431	3BD	203.8	98	302.6
	Total		3474.4	1035.41	4509.81



1 Bedroom 2 Bedroom 3 Bedroom



الطابق 15  
15<sup>th</sup> Floor Plan

Floor	Apartment No.	Apartment Type	Apartment Area	Balcony	Total Unit Area
15 <sup>th</sup>	Apartment 1501	3BD	203.8	81.9	285.7
	Apartment 1502	3BD	183.6	86.2	269.8
	Apartment 1503	1BD	90.2	23.8	114
	Apartment 1504	1BD	91.7	23.6	115.3
	Apartment 1505	1BD	90.2	11.4	101.6
	Apartment 1506	1BD	91.7	32.7	124.4
	Apartment 1507	1BD	90.1	30.3	120.4
	Apartment 1508	1BD	98.2	49.4	147.6
	Apartment 1509	1BD	90.1	26.8	116.9
	Apartment 1510	1BD	77	48.8	125.8
	Apartment 1511	2BD	141.2	44.8	186
	Apartment 1512	2BD	131.7	44.4	176.1
	Apartment 1513	1BD	90.7	16.86	107.56
	Apartment 1514	1BD	90.2	20.02	110.22
	Apartment 1515	2BD	131.7	44.5	176.2
	Apartment 1516	1BD	90.2	8.9	99.1
	Apartment 1517	2BD	131.7	44.5	176.2
	Apartment 1518	1BD	90.2	20.02	110.22
	Apartment 1519	2BD	90.7	16.86	107.56
	Apartment 1520	1BD	131.7	44.4	176.1
	Apartment 1521	2BD	141.2	44.8	186
	Apartment 1522	1BD	77	48.8	125.8
	Apartment 1523	1BD	90.1	26.8	116.9
	Apartment 1524	1BD	98.2	49.4	147.6
	Apartment 1525	1BD	90.1	30.3	120.4
	Apartment 1526	1BD	90.7	32.7	124.4
	Apartment 1527	1BD	90.2	11.4	101.6
	Apartment 1528	1BD	91.7	23.5	115.2
	Apartment 1529	1BD	90.2	23.8	114
	Apartment 1530	3BD	183.6	86.2	269.8
	Apartment 1531	3BD	203.8	81.9	285.7
	Total		3474.4	1179.76	4654.16



1 Bedroom
  2 Bedroom
  3 Bedroom











*Milos*



**ARIANE**  
REAL ESTATE

[www.arianerealestate.com](http://www.arianerealestate.com)